

# COLLIE

SENIOR HIGH SCHOOL



Wittenoom Street  
COLLIE WA 6225

Telephone: 9735 1200

Email: [collie.shs@education.wa.edu.au](mailto:collie.shs@education.wa.edu.au)



# 2019

## CONTRIBUTIONS & CHARGES

COLLIE SENIOR HIGH SCHOOL

<b>2019 TERM DATES</b> .....	<b>4</b>
SEMESTER 1 .....	4
SEMESTER 2 .....	4
<b>CONTRIBUTIONS &amp; CHARGES</b> .....	<b>5</b>
1. CONTRIBUTIONS.....	5
2. CHARGES.....	5
3. ADDITIONAL COSTS.....	5
ADDITIONAL VOLUNTARY APPROVED REQUESTS .....	5
PAYMENT OF CONTRIBUTIONS & CHARGES .....	5
PAYMENT OPTIONS.....	5
2019 START-UP PAYMENT DAYS.....	5
CANCELLING ENROLMENT ...	5
VOCATIONAL EDUCATION AND TRAINING COURSES .....	5
<b>FIRST DAY 2019</b> .....	<b>6</b>
STUDENTS.....	6
TEACHING STAFF.....	6
<b>2019 SECONDARY ASSISTANCE SCHEME</b> .....	<b>6</b>
GENERAL INFORMATION ...	6
APPLICATION FORMS.....	6
CLOTHING ALLOWANCE.....	6
<b>2019 ABSTUDY FEES ALLOWANCE AND ABSTUDY SUPPLEMENT ALLOWANCE</b> .....	<b>6</b>
<b>LOWER SCHOOL BOOKS / STATIONERY</b> .....	<b>7</b>
TEXT BOOK ACCESS.....	7
STATIONERY ITEMS.....	7
SUGGESTED BASIC STATIONERY.....	7
OTHER REQUIREMENTS.....	7
YEAR 7/8 ART PACK.....	7
YEAR 9/10 ART PACK.....	7
<b>YEAR 7</b> .....	<b>8</b>
COURSE CONTRIBUTION .....	8
<b>YEAR 8</b> .....	<b>8</b>
COURSE CONTRIBUTION .....	8
<b>YEAR 9</b> .....	<b>8</b>
CONTRIBUTIONS/CHARGES .....	8
<b>YEAR 10</b> .....	<b>8</b>
CONTRIBUTIONS/CHARGES .....	8
<b>ADDITIONAL COST ITEMS</b> .....	<b>9</b>
VOLUNTARY APPROVED REQUESTS.....	9
WHOLE SCHOOL EXTRA COST ITEMS.....	9
<b>UPPER SCHOOL BOOKS / STATIONERY</b> .....	<b>10</b>
BOOKLISTS.....	10
UPPER SCHOOL STUDENTS ART PACK.....	10
YEAR 11/12 – AEVAR, ATVAR, GEVAR, GTVAR, P1&2VAR, P3&4VAR AND CERT II VISUAL ART.....	10
<b>YEAR 11 &amp; 12 ATAR COURSES</b> .....	<b>11</b>

CHARGES ..... 11  
EXTRA COST ITEMS ..... 11  
**YEAR 11 AND 12 VOCATIONAL EDUCATION & TRAINING ..... 12**  
CHARGES ..... 12  
PART A CHARGES FOR ALL VET STUDENTS..... 12  
PART B ELECTIVE COURSE ..... 12  
PART C CHARGES FOR INDIVIDUAL PROGRAMMES. .... 12  
**VOCATIONAL EDUCATION & TRAINING EXTRA COST ITEMS ... 13**  
**COLLIE SENIOR HIGH SCHOOL STUDENT CALCULATOR ORDERS ..... 14**  
**SCHOOL UNIFORM ..... 15**  
**UNIFORM PRICE LIST ..... 15**  
**CANTEEN PRICE LIST ..... 16**

## 2019 Term Dates

### Semester 1

#### Students

##### Term 1 Commences

Monday 4 February – Friday 12 April

Holiday Break

Saturday 13 April – Sunday 28 April

##### Term 2 Commences

Tuesday 30 April – Friday 5 July

Holiday Break

Saturday 6 July – Sunday 21 July

### Semester 2

#### Students

##### Term 3 Commences

Tuesday 23 July – Friday 27 September

Holiday Break

Saturday 28 September – Sunday 13 October

##### Term 4 Commences

Tuesday 15 October – Thursday 19 December

## Contributions & Charges

The 2019 Contributions and Charges booklet provides details on how the Contributions and Charges are allocated to learning areas from years 7 – 12.

The continued partnership between the school and parents is vital to ensuring that all students receive a level of education that will be sufficient to prepare them for when they leave school.

It is recommended that parents take the time to read this booklet carefully so that they have a clear understanding of the contributions, charges, the Secondary Assistance Scheme, also called Education Programme Allowance, and other important information. Parents at Collie Senior High School have had a very good record of paying the voluntary contributions and charges and will hopefully pride themselves on their continued support for their community high school. The collection of these payments will enable us to continue to provide the best possible educational opportunities. Parents are strongly encouraged to continue to pay all contributions and charges because this will help support your child and provide the very best learning environment.

Please feel free to discuss payment arrangements in complete confidence with the Manager Corporate Services or with the Principal.

There are three parts to the financial requests

### 1. Contributions

Payment of voluntary contributions to Collie Senior High School is essential as voluntary contributions form a significant proportion of the money that the school can spend on students and this enables each learning area to be resourced to provide the best possible opportunities.

### 2. Charges

Payment of charges is compulsory. All costs to students in Years 11 and 12 are charges and are therefore compulsory. There are also charges associated with Lower School programs. Charges must be paid and a range of payment arrangements can be made.

### 3. Additional Costs

Additional costs are costs that must be paid to receive the item(s) listed. Parents may choose not to receive the item or for their child not to access an activity, so not pay the additional costs, (eg the School Magazine).

### Additional Voluntary Approved Requests

Additional Voluntary Approved Requests are voluntary and help to fund services provided by the school for the benefit of students, in areas not covered by other costs already mentioned.

## Payment of Contributions & Charges

### Payment Options

Parents who are unable to make full payment of either voluntary contributions or compulsory charges on commencement of a course should not hesitate to contact the school to discuss payment options in confidence with the Business Manager. This ongoing co-operation between our school and the parents is vitally important to ensure the best possible outcomes for our students.

Options include EFTPOS, direct deposit

**Please note the BSB and Account Number**

**Collie Senior High School**

**BSB 633000**

**Account No 150463578**

Families are encouraged to pay all voluntary contributions and charges in full as early as possible. This means the school has funds to purchase items supporting the school curriculum.

### 2019 Start-up Payment Days

Contributions and Charges can be paid at Collie Senior High School Front Administration (through main entrance) on Monday 30<sup>th</sup> and Tuesday 31<sup>st</sup> of January 2019 from 9.30am to 2.00pm. Payment can be made in cash, by EFTPOS, credit card or direct payment through bank transfer. Payments continue to be accepted throughout the year.

Pre-paid upper school book orders will be available for collection on these days. Most school book orders can be completed online with delivery direct to your home.

### Cancelling Enrolment

If your child will not be attending Collie Senior High School in 2019 please inform the school as soon as possible.

### Vocational Education and Training Courses

Students enrolled in Collie SHS delivered Vocational Education and Training (VET) courses should pay charges as soon as possible to confirm enrolment. Entrance to VET courses is very competitive and payment of charges or a commitment to a payment plan is essential to ensure the VET course enrolment. Students that do not make this arrangement may be asked to move to a lower cost VET course option.

VET fees for non-Collie SHS delivered training will be paid directly to the Registered Training Organisation (RTO). This information can be found on page 12 of this booklet.

Where courses fall under the category of VET in Schools funded courses in areas of training shortage no fee for the course will be charged.

## First Day 2019

### Students

Students commence the 2019 school year on Monday 4<sup>th</sup> February 2019. Students should be at school by 8.40am. All students will be called to a whole school assembly that will be held in the School Gym. Students will then be directed to year group meetings to receive timetables and other general information. Normal timetabled lessons will commence from period 2. Students will require materials such as file, pens, pencils and file paper and any text books that they have purchased.

Lunches can be ordered from the Canteen prior to school commencing.

### Teaching Staff

The first day for teaching staff is Thursday 31<sup>st</sup> January 2019. All teaching staff including the Principal and Deputy Principals will be involved in school development work and planning from this day. Parents / guardians wishing to see school staff should contact the school on 9735 1200 to make an appointment. This also applies to new enrolments.

## 2019 Secondary Assistance Scheme

### General Information

The Western Australian Department of Education provides an allowance to assist eligible families with secondary schooling costs.

To be eligible for the allowance the parent/guardian must hold a Centrelink or Veterans' Affairs card current 4<sup>th</sup> February – 12<sup>th</sup> April 2019.

The allowance consists of two components:

- \$115 Clothing Allowance paid directly to the parent/guardian or the school.
- \$235 Educational Program Allowance paid directly to the school.

Application is made by the parent or guardian for student/s enrolled in Years 7 – 12. Allowance is paid up to and including the year the student turns 18 years of age. Students are not eligible if they are born before or during the year 2000.

### Application Forms

Application forms are to be completed at the school by Friday 12<sup>th</sup> April 2019.

### Contributions and Charges

Schools will receive the Educational Program Allowance of \$235 for Secondary Assistance recipients. **This amount will be paid directly to the school** to reduce the contributions payable by the parent/guardian in Years 7 –10 and the course charges in Years 11 and 12.

### Clothing Allowance

The Clothing Allowance of \$115 will be paid to the parent/guardian unless you indicate on the application form that you wish it to be paid to the school. If payment to the parent/guardian is requested, the payment will be deposited into the parent/guardians bank account.

## 2019 Abstudy Fees Allowance and Abstudy Supplement Allowance

Students who receive Abstudy through Centrelink may be eligible for Abstudy Supplement Allowance.

Please note Secondary Assistance Scheme cannot be claimed as well as Abstudy Supplement Allowance.



## Lower School Books / Stationery

### Text book access

To keep costs to parents as low as possible the school provides textbooks for use in lower school. This means that parents are not required to purchase essential texts but pay a course contribution only. The various departments will ensure student access to a variety of texts as required to best meet student needs. Course contributions also cover minimal consumables in the practical areas.

### Stationery Items

The contributions and charges do not cover stationery items such as files, pens, paper etc. These items are available locally from Reuben's Newsagency. Individual items may be purchased from any supplier.

All students should have the following stationery as a minimum.

### Suggested Basic Stationery

ITEM
1 x Student Diary (Supplied for Year 7 only)
1 x 16gb USB Stick / External Hard Drive
1 x Protractor 360 degrees
4 x Glue Stick UHU 40gm
3 x Faber Eraser Large PVC Free
1 x Highlighters Faber Pkt 6 Assorted
8 x Pen Bic Crystal Medium Blue
4 x Pen Bic Crystal Medium Black
4 x Pen Bic Crystal Medium Red
4 x Pencil 2B Staedtler
1 x Pencil Case Zip Top Large
1 x Pencil Sharpener
1 x Wooden Ruler 30cm
2 x Dividers Cardboard A4 10 Tab
4 x Document Wallet Cardboard
2 x Lever Arch Files A4 PVC
2 x Loose Leaf Refill – 7mm Reinforced Paper Pkt 200 Sheets

### Other requirements

- ❑ Calculator (scientific) can be purchased from the Front Office for \$18.
- ❑ Safety Glasses (a safety requirement in all practical areas).
- ❑ Ear protection (for some areas, to be advised)
- ❑ A4 Display file for use in Home Economics classes.
- ❑ Art Pack – Year 7, 8, 9 & 10.

### Year 7/8 Art Pack

- 1 x 2B pencil – Staedtler
- 1 x 4B pencil – Staedtler
- 1 x Plastic Eraser
- 1 x Sharpener
- 1 x A3 Cardboard Folio
- 1 x A4 Sketch Book
- 1 x Paper Stump – Medium #6

---

Approximately	\$ 30.00
---------------	----------

### Year 9/10 Art Pack

- 1 x 2B pencil – Staedtler
- 1 x 4B pencil – Staedtler
- 1 x Graphite Pencil
- 1 x Plastic Eraser
- 1 x Sharpener
- 1 x A3 Cardboard Folio
- 1 x A3 Sketch Book
- 1 x Artline Fine liner Marker
- 1 x Paper Stump – Medium #6

---

Approximately	\$ 40.00
---------------	----------

Art Packs are available locally from Reuben's Newsagency. Individual items may be purchased from any supplier.



## Year 7

### Course Contribution

Course	Contribution
The Arts	\$40.00
Health & Physical Education	\$30.00
Humanities	\$50.00
Mathematics	\$30.00
Science	\$40.00
Technology & Enterprise	\$45.00
<b>Total</b>	<b>\$235.00</b>

## Year 8

### Course Contribution

Course	Contribution
The Arts	\$40.00
Health & Physical Education	\$30.00
Humanities	\$50.00
Mathematics	\$28.00
Science	\$39.00
Technology & Enterprise	\$48.00
<b>Total</b>	<b>\$235.00</b>

## Year 9

### Contributions/Charges

Course	Contribution	Charge
The Arts	\$27.00	\$20.00
Health & Physical Education	\$30.00	
Humanities	\$50.00	
Mathematics	\$29.00	
Science	\$43.00	
Technology & Enterprise	\$56.00	\$45.00
<b>Total</b>	<b>\$235.00</b>	

## Year 10

### Contributions/Charges

Course	Contribution	Charge
The Arts	\$27.00	\$30.00
Health & Physical Education	\$30.00	
Humanities	\$50.00	
Mathematics	\$30.00	
Science	\$45.00	
Technology & Enterprise	\$53.00	\$55.00
Career Education		\$70.00
<b>Total</b>	<b>\$235.00</b>	

The charge for courses in Years 9 and 10 is an extra cost for models, artwork or consumable items.

If you choose not to pay the charge, an educational program will be delivered that satisfies curriculum expectations.

If you choose to pay the charge, this will enable students to participate in an educational program that satisfies the curriculum plus have access to additional material for models, artwork or consumable items.





## Additional Cost Items

Items listed below are an indication of the maximum that parents are charged for their child to access these extra cost activities and other charges for 2019.

### Voluntary Approved Requests

Chaplain		\$5.00
ICT Resources	\$5 printing allowance per semester. Excessive printing will require additional funds in \$5 increments	\$10.00
Library		\$20.00
	Photocopying / printing per A4 sheet black & white	.10c
	Photocopying / printing per A3 sheet black & white	.20c
	Laminating business card size	.50c
P & C Donation	Per family	\$5.00

### Whole School Extra Cost Items

2019 / 2020 Year 9 Canberra Tour		\$2500.00
The Arts	Dance	\$20.00
	Drama	\$20.00
	Excursions / Incursions	\$50.00
	Media	\$20.00
	Photography / Graphics	\$20.00
	Visual Arts	\$20.00
Career Education	Excursions / Incursions	\$100.00
Country Week	Participation	\$700.00
	Uniforms	\$180.00
External Hard Drive		\$100.00
Health & Physical Education	Excursions / Incursion	\$50.00
Humanities	Excursions / Incursions	\$250.00
Inclusivity	ASDAN	\$50.00
	Community Access cost per week	\$10.00
	Excursions / Incursion	\$100.00
	Social Skills	\$50.00
Locker	Replacement locker key	\$6.00

### Whole school extra cost items cont ...

Materials D&T- Wood	Large models to be paid by student	\$20.00
Mathematics	Australian Mathematics Competition	\$10.00
	Scientific Calculator	\$20.00
Music	Band Camp	\$350.00
	Books	\$80.00
	Charge	\$10.00
	Competitions, Concerts & Excursions	\$150.00
	Instrument Hire Charge	\$150.00
	Music Shirts	\$40.00
Physical Education	Interschool Athletics & Umpire fees	\$50.00
	Winter Carnival & Entry	\$20.00
	Interhouse Swimming Carnival entry to pool and trials	\$10.00
	Interschool Swimming Carnival entry to pool	\$50.00
	Recreation Activities throughout the year	\$50.00
RDA	Insurance & Membership	\$200.00
	Horse Riding cost per week	\$15.00
School Magazine		\$25.00
School Photos		\$60.00
Science	Science Competitions, Incursions & Excursions	\$150.00
School of Isolated and Distance Education	Any additional courses or studies done through SIDE, based at Collie SHS, per course	\$100.00
Smart Rider / Student ID Card		\$5.00
Student Council	Leadership Activity	\$100.00
Student Services	Reward Activities	\$50.00
T&E	Year 9/10 ICT Just Start it Program	\$250.00
Uniforms (essential)	Items as per price list page 15	
Whole School	Visiting Drama, Dances, Cultural performances, Incursions & Excursions	\$150.00
Year 7 Diary		\$10.00
Year 7 to 12 Mountain Bike Challenge		\$200.00

## Upper School Books / Stationery

### Booklists

The student booklist will clearly indicate the texts / items you require and are issued to all Upper School students. Before ordering books, parents should calculate the total costs of the order and either mail or fax booklist with payment (do not include school charges) to OfficeMax or **order on line at [www.officemaxschools.com.au](http://www.officemaxschools.com.au)**

Text books may also be purchased directly from OfficeMax, Osborne Park, OfficeMax Willetton or any other supplier of your choice. Please note that OfficeMax applies charges of \$8.95 if ordered before 19 December or \$18.90 if ordered on or after 20<sup>th</sup> December.

It is important to check your booklist – if an error has occurred or a change of course is required – please make an appointment to see the Deputy Principal as early as possible.

Charge for School of Isolated and Distance Education (SIDE) students is payable to the school and is included in the school student charges.

Students will need to purchase a Student Diary as the school does not provide them with one.

### Upper School Students Art Pack Year 11/12 – AEVAR, ATVAR, GEVAR, GTVAR, P1&2VAR, P3&4VAR and Cert II Visual Art

- 1 x Graphite Pencil
- 2 x Artline Fineliner Markers
- 1 x Sharpener
- 2 x 2B pencils – Staedtler
- 2 x 4B pencils – Staedtler
- 1 x A3 Sketch Book – Blue
- 1 x A1 Cardboard Folio
- 1 Kneadable Eraser
- 1 x Paper Stump – Medium #6
- 1 x A4 Display Folder

Approximately

\$ 50.00

These items are available locally from Reuben's Newsagency. Individual Items may be purchased from any supplier.

2018 Year 10 / 11 students may already possess some of the items. If you wish to purchase items individually you may do so.



## Year 11 &amp; 12 ATAR courses

## Charges

Course	Charge
<b>The Arts</b>	
Visual Arts AEVAR & ATVAR	\$85.00
<b>English</b>	
English AEENG & ATENG	\$60.00
Media Production AEMPA & ATMPA	\$100.00
<b>Physical Education</b>	
Physical Education Studies AEPES & ATPES	\$60.00
<b>Mathematics</b>	
Mathematics AEMAA & AEMAM	\$32.00
Mathematics ATMAA & ATMAM	\$32.00
<b>Science</b>	
Chemistry AECHE & ATCHE	\$65.00
Human Biological Science AEHBY & ATHBS	\$65.00
Physics AEPHY & ATPHY	\$65.00
<b>SIDE – Distance Education (per course)</b>	\$100.00
<b>Technology and Enterprise</b>	
Applied Information Technology AEAIT	\$100.00

**Note:** Text book costs are in addition to course charges and will be advised with booklist.

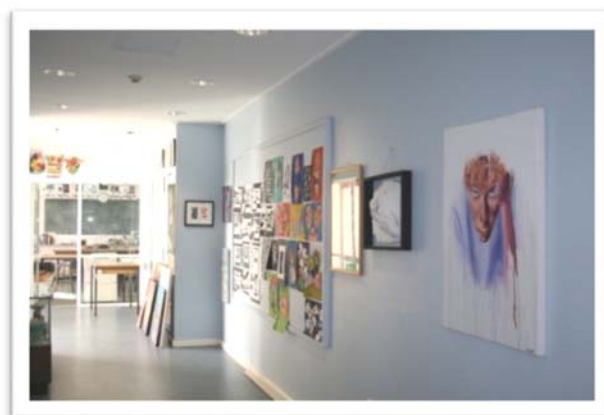
## Extra Cost Items

Following are estimated maximum costs for items and activities that each department may be conducting throughout 2019 for students studying examinable courses:

The Arts	Art Packs	\$50.00
	Excursions / Incursions	\$20.00
English	Excursions / Incursions	\$250.00
	Study Excursion	\$30.00
	Study Guide	\$30.00
First Aid Certificate		\$250.00
Mathematics	Graphics Calculator Instructions for ordering are in the back of this booklet	\$250.00
	Australian Maths competition	\$10.00

## Extra Cost Items continued

Media	Excursions / Incursions	\$100.00
	Study Guide	\$30.00
Physical Education Studies	Excursion to WA Institute of Sport, Bus & Entry Fee	\$40.00
	Entry Fees to Venues	\$30.00
	Revision Course at UWA	\$120.00
	Uniform	\$150.00
Photography	Excursions / Incursions	\$20.00
	Processing of colour film per roll	\$5.00
School Ball ticket		\$80.00
Science	Purchase of science lab coat and safety glasses	\$30.00
	Excursions / Incursions per course	\$150.00
	Workbooks purchased throughout year	\$80.00
Study Skills Program	External Presenter	\$100.00
Various examinable Courses	Workbooks and Study Guides	\$100.00
Year 12 Leavers Jacket		\$200.00
Year 12 Breakfast		\$50.00
Youth Drivers Programme		\$200.00



## 2019 Contributions & Charges

### Year 11 and 12 Vocational Education & Training

VET Charges are made up of 3 components. Total costs for all programmes will be determined by the programme and the elective course your child has chosen. Students will have charges from Part A and Part B and Part C.

#### Charges

##### Part A Charges for all VET students

Course	Charge
<b>Career and Vocational Education</b>	
Career and Enterprise GECAE (Year 11)	\$70.00
Career and Enterprise GTCAE (Year 12)	\$70.00
<b>English</b>	
English GEENG, GTENG, P1 / P2ENG, P3 / P4ENG	\$60.00
<b>Mathematics</b>	
Mathematics AEMAA, ATMAA, GEMAE, GTMAE, FEMAT, FTMAT, P1 / P2MAT, P3 / P4MAT	\$32.00

**Note:** Text book costs are in addition to course charges and will be advised with booklist.

##### Part B Elective Course.

Students will be charged for the course they have selected.

Course	Charge
<b>The Arts</b>	
Visual Arts GEVAR / GTVAR P1 / P2VAR, P3 / P4VAR	\$85.00
<b>Inclusivity</b>	
ASDAN Awards per unit	\$50.00
<b>Physical Education</b>	
Physical Education Studies GEPES GTPES P1 / P2HPE P3 / P4HPE	\$60.00
<b>Technology &amp; Enterprise</b>	
Design GEDESP GTDESP	\$85.00
Food Science and Technology GEFST & GTFST P1 / P2 FST P3 / P4FST	\$180.00
Materials Design & Technology – Metals GEMDTM, GTMDTM, P1 / P2MDTM P3 / P4 MDTM	\$170.00
Materials Design & Technology – Wood GEMDTW, GTMDTW P1 / P2MDTW P3 / P4MDTW	\$170.00

## COLLIE SENIOR HIGH SCHOOL

### Part C Charges for individual programmes.

Students will be charged for one of the following Certificates or Programmes. These charges include a Certificate cost of up to \$400

Please note as Certificate costs must be paid to the Registered Training Organisation on student enrolment no refunds will be given.

	Max Charge
<b>Community Services</b>	
Cert II Community Services	\$400.00
<b>Engineering Trades</b>	
Certificate II in Engineering	\$500.00
Engineering Consumables	\$300.00
<b>Inclusivity</b>	
Cert I in Agrifoods	\$400.00
<b>Physical Education</b>	
Cert II Sport and Recreation	\$400.00
<b>Pre Apprenticeship in Schools / VET in Schools (South Regional TAFE)</b>	
PAIS / VIS (Bunbury Courses)	SR TAFE to notify charges on enrolment
<b>Technology &amp; Enterprise</b>	
Cert II Information Media Digital Technology	\$400.00
<b>The Arts</b>	
Cert II in Visual Art – Visual Art Emphasis	\$400.00
<b>Thursday and / or Friday Possible VET Activities</b>	
Other Certificates	\$400.00

## Vocational Education & Training Extra Cost Items ...

Following are the extra costs for items and activities that each department may be conducting throughout 2019 for students studying Vocational Education and Training (VET) courses:

English	Excursions / Incursions	\$250.00
Cert I Agrifoods	Hi Visibility Shirt	\$50.00
	Steel Cap Work Boots	\$120.00
	Pants each (not Jeans)	\$60.00
Cert II Community Services	National Police Clearance	\$25.00
	Working With Children Check	\$20.00
Cert II Electrotechnology	"C" Class Electrical	\$70.00
Cert II Engineering Pathways	Engineering Trades Project	\$200.00
Cert II Sport & Recreation Cert II Community Services	The First Aid course is a requirement for some programmes	\$250.00
First Aid Certificate		
Materials D&T- Wood & Metals	Large models to be paid by student	\$540.00
Media	Excursion / Incursion	\$20.00
Mathematics	Scientific Calculator	\$20.00
Cert II Sport and Recreation	Excursions	\$200.00
School Ball Ticket		\$80.00

## Extra Cost Items continued

VET Uniforms	Jacket / Jumper	\$100.00
Community Services	Pants (each)	\$60.00
Electrotechnology Engineering Sport & Recreation	Safety Equipment, Ear Plugs, Glasses, Hat, Gloves	\$60.00
	Hi Vis or Business Style Shirts (each)	\$70.00
	Polo Shirts (Sport & rec only)	\$35.00
	Steel Cap Work Boots (Requirement for some work sites not all).	\$120.00
	Uniform Embroidery	\$25.00
Visual Art	Art Pack	\$50.00
	Excursion / Incursion	\$20.00
Year 12 Leavers Jacket		\$200.00
Year 12 Breakfast		\$50.00
Youth Drivers Programme		\$200.00



COLLIE SENIOR HIGH SCHOOL STUDENT CALCULATOR ORDERS

ORDERS ARE TO BE PLACED BETWEEN:

**OPENING 1<sup>st</sup> SEPTEMBER 2018 CLOSING 17<sup>th</sup> JANUARY 2019**

**\*ORDERS PLACED AFTER THE ABOVE DATE WILL INCUR \$14.95 DELIVERY FEE AND BE CHARGED THE ONLINE PRICE**

- STEP 1: Go to [www.abacuscalculators.com.au](http://www.abacuscalculators.com.au)
- STEP 2: Enter your school ID code to log in: [COLLIE02](#)
- STEP 3: Select your calculator and accessories and pay for your order using credit or debit card
- STEP 4: Free Delivery to the school will be 2 week after the closing date.

- CLASSPAD 400 - \$231.00 GST INCLUSIVE
- FREE – ABACUS 2 YEAR EXTENDED WARRANTY INCLUDED
- STYLUS PEN - \$5.50 GST INCLUSIVE (SPARE FOR CP400)
- PADDED CASE - \$5.50 GST INCLUSIVE

**PLEASE SEE CONDITIONS BELOW:**

- 2 YEAR REPAIR/REPLACEMENT WARRANTY (BROKEN SCREENS NOT INCLUDED)
- PLEASE KEEP PROOF OF PURCHASE FOR WARRANTY PURPOSES.
- NO REFUNDS GIVEN FOR INCORRECT PURCHASES.

If you need to place an order after the closing date:  
go onto the home page of;  
[www.abacuscalculators.com.au](http://www.abacuscalculators.com.au)

and order your calculator at the current online price. The calculator  
can be delivered directly to your preferred address for \$14.95 (delivery cost)

Any queries please call Gaynor

PH: 1800 998 424 FAX: 1800 818 171

EMAIL: [gaynor@abacus.com.au](mailto:gaynor@abacus.com.au)

Please refer to our website for full terms and conditions.



## School Uniform

School Uniform is an essential component of our school culture and ensures that students feel part of the school. School uniform standards are ratified by the School Board representing the community and also by the Student Council representing the students. It is important that students wear their uniform in an appropriate manner so that we can identify students that attend our school. The school uniform should be worn with pride as it reflects the high value that the school and community place on the value of education and on our youth.

## Uniform Price List

The following items are available for purchase from the P & C Association Uniform Shop.

### OPENING TIMES

Tuesday 3.00 pm to 3.30 pm and

Thursday 8.25 am to 8.45 am

Items Available		Sizes Range	Amount Per item
BLUE polo shirts	Lower School	12C – 16C	\$35.00
BLUE polo shirts	Lower School	SM – XXXL	\$35.00
WHITE polo shirts	Upper School	12C – 16C	\$35.00
WHITE polo shirts	Upper School	XS – XXXL	\$35.00
HOUSE polo shirts		12C – 16C	\$35.00
HOUSE polo shirts		XS – XXXL	\$35.00
Rugby Tops		XXS-M	\$75.00
Rugby Tops		LGE - XXXL	\$75.00
Track pants		10C – 16C	\$30.00
Track pants		SM – XL	\$30.00
Zip Fleece Jacket		12C – 14C	\$70.00
Zip Fleece Jacket		10A - XXXL	\$70.00
Shorts plain		12 Youth - XXL	\$30.00

**Prices are correct as at November 2018 and are subject to change without notice.**

## Canteen Price List

BREAKFAST	PRICE
½ Vegemite Bun	\$0.50

RECESS		
Menu items will vary each day. Items marked with (D) available everyday		
Cheesies bun (D)		\$2.00
Pizza Cheesies (D)		\$2.50
½ Vegemite roll (D)		\$0.50
Mini Pita		\$1.00
Nuggets (6)	Mon & Fri	\$2.50
Chicken strips	Mon & Fri	\$2.50
Hot dogs/Yummy Drummy Rolls	Tues & Thurs	\$4.00
Hash browns	Wed	\$1.00
Pizza	Wed	\$3.00

DRINKS		
Bottled Water		\$1.50
Flavoured milk	300ml	\$3.00
	600ml	\$4.00
Fruit juice 100%		\$3.00

LUNCH – HOT FOOD MONDAY & FRIDAY ONLY	
Beef pie	\$3.50
Potato pie	\$4.00
Sausage roll	\$3.50
Lasagne tray	\$4.00
Pizza rounda	\$3.00

LUNCH SALAD BOXES	
Salad – onion, capsicum, coleslaw, beetroot, potato salad, cucumber, tomato, carrot, pineapple & egg	\$6.00
With chicken or ham	\$7.00
With tuna	\$8.00
Fresh fruit salad	\$4.00

FOCCACIA'S	
All Focaccia's...	\$3.50
Avocado	\$1.50
Ham / Cheese	\$0.50
Tomato / Onion / Pineapple	\$0.30
Chicken	\$1.00

EXTRA FOR BURGERS, ROLLS, SANDWICH & WRAPS	
Avocado	\$1.50
Cheese / Beetroot	\$0.50
Pineapple	\$0.30

ROLLS & SANDWICHES		
	ROLL	SAND
Chicken & salad	\$4.50	\$4.00
Tuna & salad	\$5.00	\$4.50
Beef & salad	\$4.50	\$4.00
Cheese & salad	\$4.50	\$4.00
Ham & salad	\$4.50	\$4.00
Egg & salad	\$4.50	\$4.00
Egg plain/curried	\$4.00	\$3.50
Chicken only	\$3.50	\$3.00
Ham only	\$3.00	\$2.50
Cheese	\$2.50	\$2.00
Salad	\$3.50	\$3.00
Buttered Roll	\$1.00	
<b>Rolls &amp; Bread – choice of white, multigrain or wholemeal</b>		

TOASTIES	
Spaghetti or Baked Beans	\$2.50
Cheese	\$2.50
Cheese & tomato	\$3.00
Ham & cheese	\$3.50
Ham, cheese & tomato	\$4.00
Ham, cheese & pineapple	\$4.00
Chicken	\$3.50
Chicken & mayo	\$3.50
Chicken, cheese	\$4.00
Chicken, cheese & mayo	\$4.00
<b>Toasted buns add 50c</b>	

DAILY SPECIALS	
All Daily Specials	\$6.00
SUMMER	
Chicken Fillet Burger	Mon
Chicken Cheese & Bacon Burger or Nacho's	Tues
Pulled Pork Burger or Chicken Chilli Sub	Wed
Chicken Caesar Salad or Hamburger	Thurs
Fish Burger or Chicken Chilli Wrap	Fri
WINTER	
Bacon & Egg Burger	Mon
Chicken Burrito's or Hamburger	Tues
Hot Chicken Mayo Rolls or Hot Beef Gravy Rolls	Wed
Nachos or Chicken Chilli Wrap	Thurs
Chicken Fillet Burger	Fri

DESSERT/SNACKS – AFTER LUNCH

*Prices are current as at November 2018*